



Manual for  
Rowingboards, iCoaster  
and Airkayak

*Assembly instruction and  
operating instructions*

MOJO 18' | DUDE 18' | LITE 15' | iCoaster | AIRKAYAK 16'

# Table of Contents

1	Safety guidelines.....	4
2	Rowing boards 18'.....	5
2.1	Overview.....	5
2.1.1	MOJO 18'.....	5
2.1.2	DUDE 18'.....	6
2.2	Assembly.....	7
2.3	Roll up.....	9
2.4	Positioning the Rowing Skid on the MOJO 18' and DUDE 18'.....	11
3	Rowingboard LITE 15'.....	12
3.1	Overview.....	12
3.2	Assembly LITE 15'.....	13
3.3	Folding away LITE 15'.....	15
3.4	Positioning the Rowing Skid on the LITE 15'.....	16
4	iCoaster.....	17
4.1	Overview.....	17
4.2	Assembly iCoaster.....	18
4.3	Roll up iCoaster.....	21
4.4	Positioning the Rowing Skid on the iCoaster.....	23
5	AIRKAYAK 16'.....	24
5.1	Overview.....	24
5.2	Assembly.....	25
5.3	Folding away.....	28
5.4	Additional information.....	30
5.4.1	Positioning the Rowing Skid on the Airkayak.....	30
5.4.2	Securing the kayak seat.....	31
5.4.3	Cleaning the boat.....	32

6	Accessories and other matters .....	33
6.1	Air pump (standard accessories for MOJO, DUDE, iCoaster) .....	33
6.2	Air pump (standard accessories for LITE and AIRKAYAK) .....	35
6.3	Electric pump (option) .....	37
6.4	Securing the additional seat on boards and iCoaster (option) .....	39
6.5	Tying up & towing the board.....	40

# 1 Safety guidelines

Rowing can be dangerous and physically demanding. Rowing can lead to dangerous situations developing that result in serious injury. The user of this product should have a basic understanding of the risks involved when rowing and be aware of consequences. Please observe the following safety standards when using this product:

- Get instruction on how to row.
- Get training in First Aid and take a First Aid kit with you.
- Always wear a life jacket or similar buoyancy aid.
- Never row alone.
- Wear clothing appropriate for the weather conditions. Cold water and/or cold weather can cause hypothermia.
- Check your equipment before each use for signs of wear or failure.
- Do not consume alcohol or take drugs before using this product.
- Do not go rowing if there is flooding.
- Watch out for the depth of the water, tide changes, dangerous currents and sudden weather changes.
- Explore waters you are not familiar with, with caution; carry the product if necessary.
- Do not exceed your rowing ability. Do not overestimate your capabilities.
- Consult your doctor before you start with rowing training.
- Follow the manufacturer's recommendations when using this product.
- If extra accessories are added to the boat/board, only use materials approved by the manufacturer; embarking or disembarking should remain unobstructed.
- Read the instruction manual before using this product.

## 2 Rowing boards 18'

### 2.1 Overview

#### 2.1.1 MOJO 18'



1.....MOJO 18'

2.....2 x fin 2.4" (6 cm)

3.....Fin 7.7" (19.5 cm)

4.....Transport strap

5.....Repair kit

6.....Air pump with hose

7.....Backpack (Dry Bag)

## 2.1.2 DUDE 18'



- 1.....DUDE 18'
- 2.....2 x fin 2.4" (6 cm)
- 3.....Fin 7.7" (19.5 cm)
- 4.....Transport strap

- 5.....Repair kit
- 6.....Air pump with hose
- 7.....Backpack (Dry Bag)

## 2.2 Assembly

### Step 1: Inflate

Make sure the valve pin is in the correct position before inflating. Push the valve pin down to switch between the two valve positions.



Now connect the hose of the pump to the valve and pump up the board to a maximum pressure of 14 psi (1.0 bar).

### Step 2: Insert fin

The large 7.7" fin is used at the back and the two small 2.4" fins at the front of the board.

Slide the front pivot of the fin into the fin box and then slide it forward.



Fold back the fin into the finbox.



Lock the fin with the quick release lever.



**Note:**

Do not drag the board over the ground. Place it in the water to avoid damage. When the fin is inserted, make sure that it is not stressed by the weight of the board or other objects.



## 2.3 Roll up

Start rolling up the board at the front and then roll it up until the rear end.



After rolling up the board, place the transport strap around the rolled-up board and tighten the strap. The board can now simply be packed in the backpack with the other accessories.





**Note:**

Make sure that the board is completely dry before folding it away. When you are deflating the board, use the pump to extract the air from it.

If the board is rolled up and packed when wet, it must be unpacked and rolled out again as soon as possible to dry completely.

## 2.4 Positioning the Rowing Skid on the MOJO 18' and DUDE 18'

The MOJO 18' and DUDE 18' rowing boards can be used alone, or in pairs (with two rowing systems).

To row on your own, place the rowing system on the board's 4 long positioning pads. The position of the system can be adjusted individually by hooking into the front or rear two D-rings.

To row in pairs, position one rowing system on the 4 front circular positioning pads. Position the second rowing system on the 4 rear round positioning pads.



# 3 Rowingboard LITE 15'

## 3.1 Overview



- 1.....LITE 15'
- 2.....Safety leash
- 3.....Repair kit
- 4.....Transport strap
- 5.....Fin 14 cm (5.4")
- 6.....Air pump with hose
- 7.....Backpack (Dry Bag)

## 3.2 Assembly LITE 15'

### Step 1: Inflate

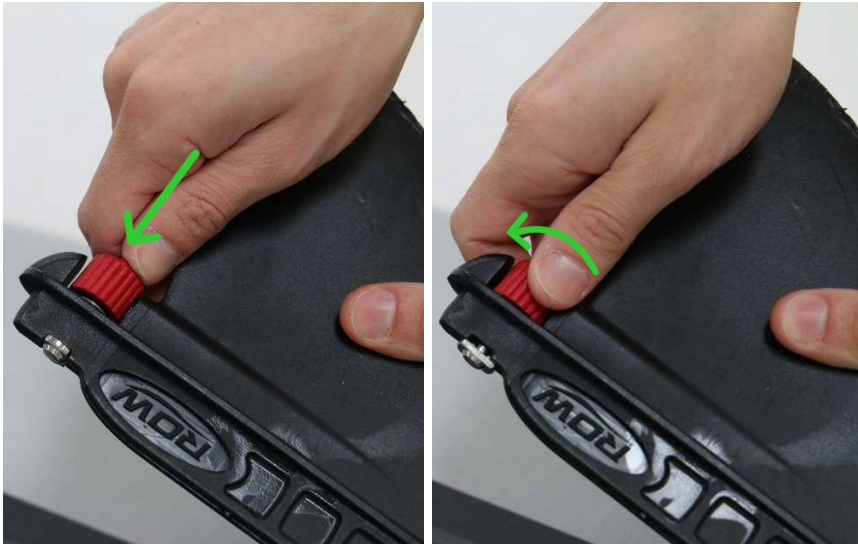
Make sure the valve pin is in the correct position before inflating. Push the valve pin down and rotate anti-clockwise to ensure that the valve is in the correct position to inflate.



Now connect the hose of the pump to the valve and pump up the board to a maximum pressure of 14 psi (1.0 bar).

### Step 2: Insert fin

Press down the Easy-Mount fastener and rotate the knob to insert the fin.



Slide the guide pin of the fin into the fin box rail and rotate the knob to secure the fin in place. Make sure the fin is securely fixed in the fin box.



**Note:**

Do not drag the board over the ground. Place it in the water to avoid damage. When the fin is inserted, make sure that it is not stressed by the weight of the board or other objects.

### 3.3 Folding away LITE 15'

Fold over the stern of the board once so that the fold line is at the side fold mark (1)). Then fold the board at the next fold mark (2). Then continue rolling up the board towards the bow.

When the board is rolled up, place the transport strap around the rolled-up board and tighten the strap. The board can now be easily stowed in the backpack with the other accessories.



**Note:**

Make sure that the board is completely dry before folding it away. When you are deflating the board, use the pump to extract the air from it.

If the board is rolled up and packed when wet, it must be unpacked and rolled out again as soon as possible to dry completely.

### 3.4 Positioning the Rowing Skid on the LITE 15'

The LITE 15' rowing board can be used only alone (with one rowing system).

Place the rowing system on the board's 4 long positioning pads. The position of the system can be adjusted individually by hooking into the front or rear two D-rings.





# 4 iCoaster

## 4.1 Overview



- 1.....iCoaster
- 2.....2 x fin 2.4" (6 cm)
- 3.....Fin 7.7" (19.5 cm)
- 4.....Transport strap

- 5.....Repair kit
- 6.....Air pump with hose
- 7.....Backpack (Dry Bag)

## 4.2 Assembly iCoaster

### Step 1: Inflate mainboard

Make sure the valve pin is in the correct position before inflating. Push the valve pin down to switch between the two valve positions.



Now connect the hose of the pump to the valve and pump up the board to a pressure of maximum 14 psi (1.0 bar).



### Step 2: Inflate side chambers

Pump up the two side chambers to a pressure of 4 PSI (0.3 bar).

## **Step 2: Insert fin**

The large 7.7" fin is used at the back and the two small 2.4" fins at the front of the iCoaster.

Slide the front pivot of the fin into the fin box and then slide it forward.



Fold back the fin into the finbox.



Lock the fin with the quick release.



**Note:**

Do not drag the board over the ground. Place it in the water to avoid damage. When the fin is inserted, make sure that it is not stressed by the weight of the board or other objects.

## 4.3 Roll up iCoaster

### Step 1: Deflate

After letting the air flow out of the board, the remaining air must be deflated with the air pump. First, deflate the main board. Then deflate the side chambers. During the deflating of the side chambers, these must be folded towards the center of the board.



### Schritt 2: Roll up

Start rolling up the iCoaster at the nose cone and then roll it up until the rear end.



After rolling up the iCoaster, place the transport strap around the rolled-up board and tighten the strap. The iCoaster can now simply be packed in the backpack with the other accessories.



**Note:**

Make sure that the board is completely dry before folding it away. When you are deflating the board, use the pump to extract the air from it.

If the iCoaster is rolled up and packed when wet, it must be unpacked and rolled out again as soon as possible to dry completely.

## 4.4 Positioning the Rowing Skid on the iCoaster

The iCoaster can be used alone, or in pairs (with two rowing systems).

To row on your own, place the rowing system on the 4 long positioning pads. The position of the system can be adjusted individually by hooking into the front or rear two D-rings.

To row in pairs, position one rowing system on the 4 front circular positioning pads. Position the second rowing system on the 4 rear round positioning pads.





# 5 AIRKAYAK 16'

## 5.1 Overview



- 1..... AIRKAYAK 16'
- 2..... Deck support strip
- 3..... Fin 8"
- 4..... 2 x bilge sponges
- 5..... Transport strap
- 6..... Repair kit

- 7..... Air pump with hose
- 8..... 2 x kayak seats
- 9..... 2 x seat cushion
- 10..... 2 x footrest
- 11..... Backpack



## 5.2 Assembly

### Step 1:

Make sure the valve pin is in the correct position before inflating. Push the valve pin down and rotate anti-clockwise to ensure that the valve is in the correct position to inflate.



Now connect the hose of the pump to the valve and pump up the three chambers of the kayak one after the other to a pressure of 0.7 bar.

**Step 2:**

When you have inflated the boat, you can install the deck support strip. First insert one end of the deck support strip into the corresponding loop on the boat. Bend the deck support strip downwards to be able to insert the other end into the loop and then push the deck support strip upwards again to tension the fabric of the boat.



### **Step 3:**

Insert the bilge sponges on both sides of the boat between the side and the hull to soak up any water inside the boat.



### **Step 4:**

Slide the fin into the fin box guide and lock the fin in place with the safety wedge.



### **Note:**

Do not drag the kayak over the ground. Place it in the water to avoid damage. When the fin is inserted, make sure that it is not stressed by the weight of the kayak or other objects.

## 5.3 Folding away

### Step 1:

When you have extracted all the air from the three air chambers, remove the deck support strip and the bilge sponges. Then fold the sides inwards. Then turn the boat over and fold it lengthwise down the centreline so that the sides are on top of each other.



### Step 2:

Fold over the rear side directly after the valve and then roll it from the bow of the kayak towards the stern.

When the kayak is rolled up, place the transport strap around the rolled-up kayak and tighten the strap. The kayak can now be easily stowed in the backpack with the other accessories.



**Note:**

Make sure that the boat is completely dry before folding it away. When you are deflating the kayak, use the pump to extract the air from it. If the Airkayak is rolled up and packed when wet, it must be unpacked and rolled out again as soon as possible to dry completely.

## 5.4 Additional information

### 5.4.1 Positioning the Rowing Skid on the Airkayak

The AIRKAYAK 16' can only be rowed with one rowing system. For one additional passenger a kayak seat can be mounted.

Place the rowing system on the large non-slip mat in the kayak and attach the two straps to the matching D-rings.

For paddling with the AIRKAYAK 16' both kayak-seats can be mounted.

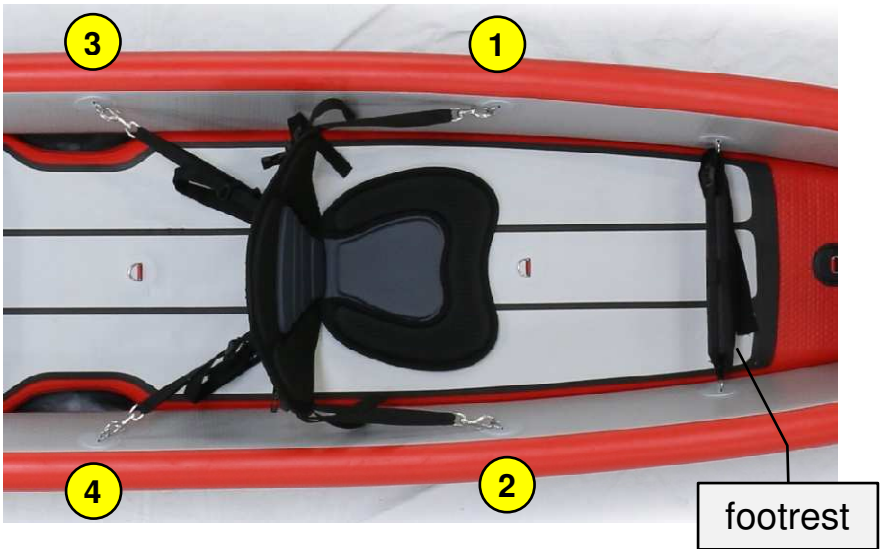


## 5.4.2 Securing the kayak seat

Hook the buckles into the matching D-rings on the sides. Tighten all four straps evenly to secure the seat in place.

The seat cushion is slipped over the seat and fixed by closing the zip.

The footrest is fixed on the 2 lower D-rings.





## 5.4.3 Cleaning the boat

### Step 1:

Open the water drain holes at the front end and rear end of the kayak and remove both bilge sponges.



### Step 2:

Rinse both cleaning openings in both directions (front and rear) to remove any dirt.



### Step 3:

Place the kayak at an angle so the water can drain through the drain valves.



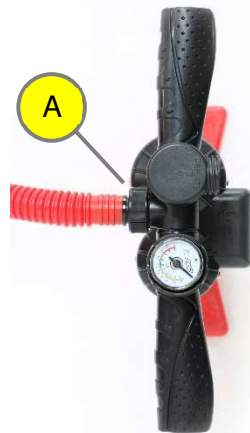
## 6 Accessories and other matters

### 6.1 Air pump (standard accessories for MOJO, DUDE, iCoaster)

Air pump with triple action and deflate function, up to 21 psi (1.4 bar).

The air pressure in psi can be read on the built-in pressure gauge between the handles.

The hose can be attached to the air pump at 2 connections and removed again for transport.



#### **Inflate:**

Attach the hose to the front connector (A) of the pump. Connect the other end of the hose to the valve on the board. The air pump has two cylinders and can be operated in 3 steps using a rotary function:

**Step 1:**

Pumps the biggest volume. Both pistons supply air when pushed down and pulled out.

With step 1, the first psi can be pumped quickly into the board. When pumping gets exhausting, you switch to step 2.

**Step 2:**

Both pistons deliver air only when pushed down.

**Step 3:**

Generates the highest pressure. Only one piston delivers air when pushed down.

For inflation to the final end pressure of the board.



**Deflate:**

Before rolling up the boards, it is advisable to deflate the air.

Attach the hose to the rear connector (B) of the pump. The air can now be deflated with the pump.

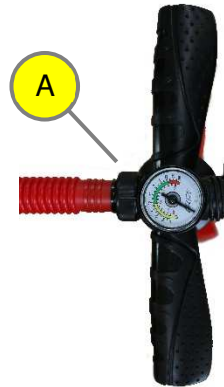


## 6.2 Air pump (standard accessories for LITE and AIRKAYAK)

Double-action hand pump with up to 26 psi (1.8 bar) with single/double-action-switch and inflate function.

The built-in pressure gauge between the handles shows the air pressure in psi and bar.

The hose can be attached to the air pump at 2 connections and removed again for transport.



**Inflate:**

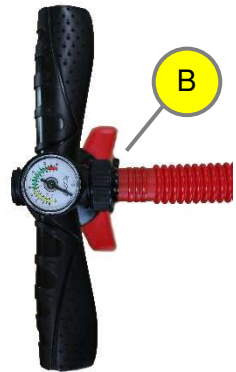
Attach the hose to the front connector (A) of the pump. Connect the other end of the hose to the valve on the board or airkayak. The air pump has one cylinder and can be switched from single to double action via a rotary function. With the double action function (2) the first psi can be quickly pumped into the empty board. When pumping gets exhausting, you can switch to single action (1), so that air is only pumped into the board when you press down the pump.



**Deflate:**

Before folding the LITE and the Airkayak, it is advisable to suck out the air.

Attach the hose to the rear connector (B) of the pump. The air can now be deflated with the pump.



## 6.3 Electric pump (option)

The electric pump can inflate up to a pressure of 20 psi (1.4 bar). It automatically switches between volume and pressure mode.

The pump has an inflation and deflate function.



The pump can be powered by a 12V car battery. Either use the cigarette lighter plug or connect the air pump directly to the car battery using the alligator clip adapter.

We also offer a compact battery (12V/10Ah) for the air pump. The battery is supplied with a 230V charger.

The electric pump is connected to the battery with the cigarette lighter plug.



## Inflation operation

- Connect the hose with the air pump inflation inlet (1).
- Install the other end of the hose into the valve of the board or AIRKAYAK.
- Plug the DC plug into the 12V DC socket.
- Press the pressure unit toggle button **PSI/BAR**, to select the unit you need.
- Press the pressurizing button **+** or decompressing button **-** to set the pressure value you need, with the range of the pressure value from 0 to 20 PSI.
- After finishing the above steps, press the **power switch button** to start to inflate.
- During the inflating process, you can press the pressurizing button **+** or decompressing button **-** to increase or reduce the pressure value, press the pressure unit toggle button **PSI/BAR** to switch the unit, and press the **power switch button** to stop.
- When the pressure reaches the set value, the air pump will stop working automatically.
- After completing the inflation, pull out the DC plug from the 12V DC socket and take down the hose from the board.

## Deflation operation

- Connect the hose with the air pump deflation outlet (2).
- Install the other end of the hose into the valve of the board or AIRKAYAK.
- Plug the DC plug into the 12V DC socket.
- Press the **power switch button** of air pump and start the deflation.
- When all the air is discharged, then the power can be turned off to stop the deflation.

## Precautions

- The applied power source must be the 12V DC power source.
- Don't make the air pump work for more than 20 minutes, because that motor overheating may cause internal damage; and the air pump shall be fully cooled for 30 minutes after continuously working up to 20 minutes.

## 6.4 Securing the additional seat on boards and iCoaster (option)

Hook the snap hooks onto the D-rings on the board. Tighten all four straps evenly to adjust and secure the backrest.



## 6.5 Tying up & towing the board

To enable the boat to be tied up or towed, there is a larger D-ring on the bow of the rudder boards and the iCoaster.











**Row&Sail GmbH**

Gewerbezeile 9

4040 Lichtenberg/Linz

Austria

Tel.: +43 (0) 7239 / 20275

Fax: +43 (0) 7239 / 20275 - 30

[office@rowandsail.com](mailto:office@rowandsail.com)

[www.rowonair.com](http://www.rowonair.com)

Copyright © Row&Sail GmbH - 09/2022

The logo for Row&Sail GmbH is oriented vertically. It features the word "ROW" in a large, bold, black sans-serif font. To its right is a red, curved graphic element that resembles a stylized sail or a swoosh. Below "ROW" is an ampersand "&" in a smaller, bold, red sans-serif font. To the right of the ampersand is the word "SAIL" in a large, bold, black sans-serif font, matching the style of "ROW".